

# Swindon Town Football Club



**Official Programme 5np 1/-**



**Swindon Town v Carlisle United**



---

First-hand

Lively

Reports

Complete

Comprehensive

Coverage

Close-up Action

Shots

Every Game

At home or away

**The Evening Advertiser**  
has it covered

---

# ***McILROYS***

**FULLY LICENSED  
RESTAURANT**

**FOR THE BEST-VALUE LUNCH IN TOWN  
OPEN ALL DAY SATURDAY**

*MORNING COFFEE  
LUNCHEON  
AFTERNOON TEA  
SILVER-GRILL SERVICE*

Private room for meetings, private luncheons and dinners, celebrations

McILROYS · REGENT STREET · SWINDON 5294

# Swindon Town Football Company Limited

**Registered Office** County Ground, Swindon

**President** W J Castle

**Vice-Presidents** J Davies H Williams

**Directors**

**Chairman** H E Lane

**Vice-Chairman** R Fricker

F L Collings A W Done M Earle C J Green

F Plyer K H Wilmer Dr J Nicholas and T Beales

**General Manager** R A Morse

**Secretary** R J Jefferies

**Team Manager** F Ford



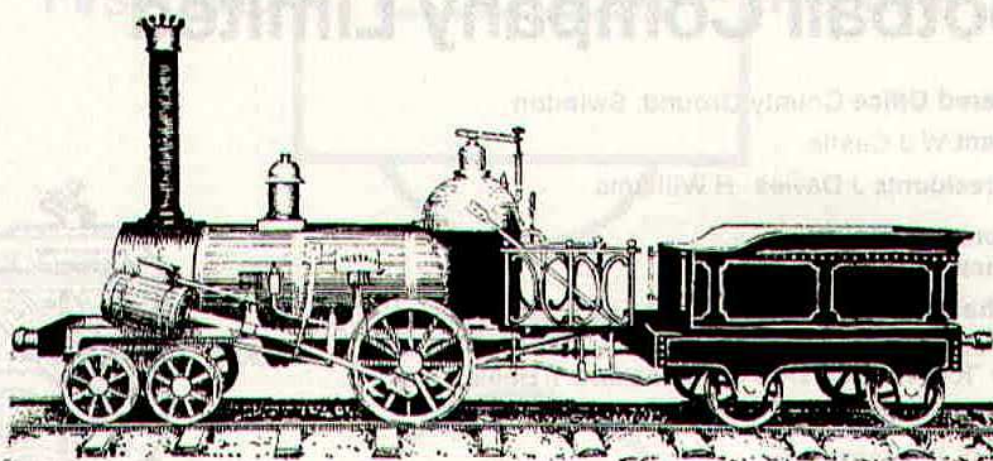
**Saturday, 24th April, 1971 – Division II**

## Swindon Town v Carlisle United

**Kick-off 3 p.m.**

Swindon Town	OFFICIALS	Carlisle United
1 Downsborough	<b>REFEREE</b>	1 Ross
2 Thomas	Mr I T Smith	2 Hemstead
3 Trollope	Accrington	3 Gorman
4 Butler		4 Ternent
5 Burrows		5 Winstanley
6 Harland		6 Sutton
7 Peplow		7 Barton
8 Smart		8 Martin
9 Jones	<b>LINESMEN</b>	9 Webb
10 Noble	<b>Red Flag:</b>	10 Hatton
11 Rogers	Mr G A Tovey	11 Balderstone
12	Kidderminster	12
Colours:	<b>Yellow Flag:</b>	Colours:
Red and White	Mr A F Williams	Blue and White
	Dudley	





**MADE IN 1843!**

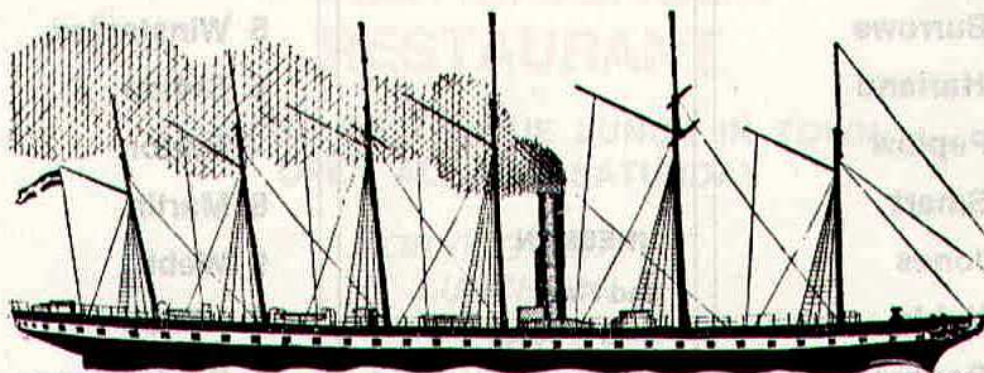
the year that ARKELL'S BREWERY and Swindon's  
G.W.R. Works were founded.

# ARKELLS

## THE LOCAL BREW!

Time honoured by 127 years.

*GOOD HONEST BEER  
IN  
DELIGHTFUL LICENSED HOUSES*



**"S.S. GREAT BRITAIN"**

built at Bristol in 1843. Designed by the younger Brunel, she was  
the first large vessel to be built of iron and the first screw  
steamship to cross the Atlantic. Her speed was about 12 knots.



# news & views

Today we play our last home League fixture of the season.

What appeared at one time to be an exciting finish to our matches in the League seems to have disappeared. Granted our visitors are not quite out of the running for promotion, but our two remaining games have lost some of their 'bite'. Watford, by virtue of their win at Cardiff, seem quite free of relegation problems, and Luton, having lost all three of their games at Easter, cannot possibly gain promotion.

Perhaps in some ways the season has been a disappointing one, but it has been most interesting, with our best spell coming in the middle. We have scored 58 goals, and only three other clubs in our Division has exceeded that total.

The average attendance is a little lower than last year but, nevertheless, the Club has been very well supported.

Talking of supporters, I expect many of you saw the incident on television in last Saturday's 'Match of the Day'. After all the commotion had settled down and play had restarted, the commentator remarked that the home supporters were singing 'We'll support you ever more'. Those are the real supporters, he remarked, but are they? I wonder if they would have been singing that, or even been present had their club been in bottom position. No, the real supporters are those who come to the matches week in and week out, and stand by the club through thick and thin, and they certainly do not demonstrate or barrack the players. People, like one 'old-timer' we heard of a few days ago. 'Herbie' Griffiths of Nailsworth travels at least sixty miles for every game, and has been a regular supporter since the days of Harold Fleming. Well over the retiring age but still working, he just lives for Swindon Town F.C. He has to endure a lot of leg-pulling and 'stick', because most of his friends at the Social Club support Bristol Rovers or Bristol City. Maybe we ought to thank his wife because she always buys his Christmas present well in advance - yes, you've guessed, a Season Ticket in the Old

Stand. 'Well played' Herbie. We salute you.

The point is, we have many, many more supporters like this. I wish we knew more of them, but men of this calibre dislike the limelight.

With the building of the new stand many difficulties have arisen, especially for the officials and stewards of the Club. Throughout the season the office has been under constant pressure with the coming and going of various companies and sub-contractors. Sudden decisions and alteration of plans has created many difficult problems. I have often heard the office likened to Waterloo Station. Yet despite all this, the organisation has continued smoothly and efficiently, but I'm sure Mr. Morse, Mr. Jefferies and Mrs. Moss have often crawled wearily home with telephone bells still ringing in their ears.

The stewards and gatemen connected with the Old Stand have faced many difficulties. At times the official entrance and the underneath portions of the stand erected, were reminiscent of the trenches in World War I.

Most of the official rooms were demolished, and temporary buildings (almost Heath Robinson) had to be used. However, good humour has prevailed, and everyone, including all our visitors, have willingly put up with the discomforts. Thank you all very much.

Thanks also to St. John's Ambulance, Ladies and Gentlemen, who at all times and in all weathers have been present to care for any in need of help.

To the Police also, our grateful thanks, for the many difficult tasks they have been called upon to perform. Due to their efforts, and also the good sense of all spectators, we have had little of crowd scenes.

Finally a little pat on the back for ourselves, we who are connected with this programme. It was pleasing to read in the Football Review that the cover of Swindon Town programme is one of the most attractive. Here I feel the credit must go to Mr. Lewington of the Borough Press and our own Secretary, Mr. Bob Jefferies.



# THE GREAT WESTERN HOTEL

(OPPOSITE SWINDON RAILWAY STATION)

The business man's hotel with a top class  
steak bar too!

Specialists in  
LUNCHEONS and DINNERS  
WEDDING PARTIES and RECEPTIONS  
good food — quick service

**J. ARKELL and SONS LIMITED Telephone SWINDON 22047**

## Spillers

**132 Victoria Road Swindon**  
Telephone 22329

**"HOME OR AWAY"**

**our function is to ensure that your home is  
tastefully and economically furnished**

SWINDON'S COMPLETE HOUSE FURNISHERS

### **New City Office Supplies Limited**

Office and Stationery Suppliers  
to Industry and Commerce  
6 Commercial Road Swindon  
Telephone Swindon (STD Code 0793) 4605



## CLARK BROS. (Swindon) LTD

Building and Civil Engineering Contractors

CONSULT US FOR  
BUILDING AND CIVIL ENGINEERING  
CONSTRUCTION IN ALL ITS PHASES

**STRATTON ROAD**

**SWINDON**

Telephone Swindon 27261



# Supporters club notes

As this is the last League match of the season, the Officers and Committee of the Supporters' Club wish all supporters a pleasant summer holiday, although most of you, I expect, will be at the County Ground for the two home matches against Bologna City on Wednesday, 26th May, and against Sampdoria (Genoa) on Saturday, 29th May.

Some 40 of us will be packing on Sunday, 30th May for the flight to Venice on the Sunday night, where we shall meet up with the coach party who leave the day before. We will then meet the two day flights, which will arrive on Tuesday, 1st June and Friday, 4th June. This is provided that these flights are sufficiently supported.

If Swindon reach the Final, those of us on the 15-day holiday hope to meet a third flight of supporters somewhere in Italy. If Cagliari reach the Final, we unfortunately will miss the Final, so therefore you may take it from me, that we in Italy will be cheering for Inter-Milan which is just up the road from Venice.

If there is anyone interested in the day flights, contact Patrick Travel, 32 Havelock Street, Swindon, telephone 21262.

The Social Club will be open as usual throughout the close season and members are reminded to renew for next season, especially those who live out of Swindon. Also a reminder of the Annual General Meeting, which will be held sometime in June, so keep your eyes peeled for the date.

Our London branch have organised a coach for the Luton game (1st May), so if any of our London fans are interested contact Mr. D. Talbot, 18 Home-dale Road, London, N.W.1.

## Social Club Draws

Sunday, 11th April - winning numbers 29 and 20. One winning ticket, number 6115 wins £45.

Sunday, 18th April - winning numbers 6 and 15. Four winning tickets numbers 2912, 8562, 8552 and 8867 share £45.



Steve Peplow, the Town's young winger, in action against Cardiff City. Also in the picture is Bobby Woodruff, the former Swindon player.



## CECIL GREEN

Artistic Decorations in all its branches

**12 Armstrong Street  
Swindon Wilts**

Telephone 4593

## C. Goodenough and Sons

**Removal and Storage Contractors**  
any distance

**25 Cricklade Street Swindon**

Telephone 4555 and 3855

## G. A. Streetly

Tobacconist and Confectioner

**10 BOURNE ROAD  
MOREDON SWINDON**

Telephone 4956

## W. J. SELWOOD

Telephone Swindon 5884

### Saddlery

General Leather Goods Manufactured and  
Repaired to Your Individual Requirements

**103 BROAD STREET  
SWINDON WILTSHIRE**

## Notton's Cafe

**COUNTY ROAD**

Cliff and Grace Hayward  
200 yards from Ground

**Snack and Grill Service  
all day**

For High Class  
Central Heating, Plumbing  
Painting and Decorating  
Electrical Installations  
and Repairs

**NORTH WILTS  
Sanitary and Heating  
Co. Ltd.**

**NEWPORT STREET SWINDON**  
Telephone 5373/4



THE ALCOHOL FUEL

### COATE GARAGE

REPAIRS - OVERHAULS - WELDING  
SERVICING - REBORING - TYRES

Props. E. V. & W. H. Mattick  
Marlborough Road Swindon

## Leese, Ing & Co. Ltd.

Mineral Water and  
Squash Manufacturers

**LANSDOWN ROAD SWINDON**

Telephone 22744

## Maylott Studios

**For Group and Sports Photographs**

Official Photographer to  
Swindon Town Football Club

**31 Faringdon Road**

Telephone 22792

Always at your service

## L. Bibby

For all Types — Rags, Iron and Metal, etc.  
Spot Cash Paid. Please Telephone 2101  
and our van will call.

**THE PADDOCK ERMIN STREET  
STRATTON ST. MARGARET**



# **our visitors**

## **Carlisle United**



### **Chris Balderstone (Forward)**

Born Huddersfield. Signed for United in June 1965 from his home town club and up to the end of season 1969/70 had made 234 League and Cup appearances, scoring 49 goals. A Yorkshire county cricketer. Joint leading scorer last season with 15 goals.

### **Frank Barton (Forward)**

Born Barton on Humber. Joined United in January 1968 from Scunthorpe, his only other professional club. 97 League and Cup appearances up to the end of season 1969/70, and 14 goals. Youth International honours.

### **Tom Clarke (Goalkeeper)**

Born Ardrossan. Joined United in July 1970. His previous club was Airdrie, whom he joined from a junior side.

### **Joe Davis (Full-back)**

Born Glasgow. Signed from Hibernian in December 1969. A 'regular' with the Edinburgh club for a number of seasons. 25 League and Cup appearances last season.

### **Peter Garbutt (Half-back)**

Born Corbridge. Captained the winning Crook Town side in the Amateur Cup Final of 1963. Has been a professional with United since August 1964. Up to the end of season 1969/70 had made 148 League and Cup appearances scoring 13 goals.

### **Bob Hatton (Forward)**

Born Hull. Joined United from Northampton Town in July 1969. Previous service with Wolves and Bolton Wanderers. Joint leading scorer with 15 goals last season from 50 League and Cup appearances.

### **Tommy Murray (Forward)**

Born Caldercruix, Scotland. Signed from Airdrie, where he was one of Scotland's leading scorers, in March 1967. Up to the end of last season had made 124 League and Cup appearances scoring 39 goals.

### **Derek Hemstead (Full-back)**

Born Scunthorpe. Signed for United from his home town club in July 1969. 44 League and Cup appearances last season scoring 1 goal.

### **Dennis Martin (Forward)**

Born Edinburgh. Joined United in June 1970 from West Bromwich Albion for whom he made over 20 first team appearances. Scored one of the goals against United in last season's League Cup semi-final.

### **Willie O'Neill (Full-back)**

Born Glasgow. Signed from Celtic in May 1969. Considerable experience with the Glasgow club including European Cup ties. Injuries last season restricted his appearances to 19.

### **Bobby Owen (Forward)**

Born Bolton. Signed for United in June 1970 from Manchester City. Scored on his debut for Manchester City in the 1968 Charity Shield match.

### **Allan Ross (Goalkeeper)**

Born Glasgow. Joined United in June 1963 from Luton Town. During the past season was included in the Scottish International party without actually winning a 'cap'. 241 League and Cup appearances to the end of season 1969/70.

### **Michael Sutton (Half-back)**

Born Norwich. Signed from Chester in June 1970. Previous experience with Norwich City his home town club.

### **Stan Ternent (Half-back)**

Born Felling-on-Tyne. Transferred to United from Burnley in May 1968. 88 League and Cup appearances in his first two seasons at Brunton Park.

### **Graham Winstanley (Half-back)**

Born Croxdale, C. Durham. Signed in August 1969 from Newcastle United, his only other professional club. 49 League and Cup appearances last season, and scored 4 goals.



## CARTER BROS. OF SWINDON

Car Radio  
Specialists

**AND NORTH WILTS RENTALS**

Hi-Fi Sales  
and Service

**FOR THE FINEST IN TELEVISION**  
To purchase or for rental

Personal and courteous attention : The finest after sales service in Town  
One of the few really Private Firms

**Staunch supporters of the Town**

**18 Lagos Street Swindon Telephone 6640 or 23270**

## THE PORK SHOP

(Swindon Bacon Curing Co. Ltd.)

Specialists in

**Bacon - Pork - Cooked Ham**

**50 FLEET STREET SWINDON**

Telephone 22122

## J. WILMER

**Coal Merchants**

**St. Margaret's Road Swindon**

Telephone 22535

## SOUTHERN LAUNDRY CO. LTD.

Launderers and Dry Cleaners

**HAYDON STREET SWINDON**

Telephone 4161

At Your Service

## A. E. LUDLOW LIMITED

Wholesale Fruit and Potato Merchant

**COLBOURNE STREET  
SWINDON WILTSHIRE**

Telephone Swindon 3583

We deliver Fresh Fruit, Vegetables  
and Potatoes daily—**Wholesale Only**

## BRETTS

**PET and GARDEN SUPPLIES**

**32-33 Commercial Road**

and

**6 Cromwell Street Swindon**

For Paints of Good Quality

*H. S. Hodges & Sons*

(SWINDON) LTD.

**Cricklade Road Swindon**

Telephone 22422

Dulux, Brolac, Valspar, Wallcharm, etc.

## Borough Press Swindon Limited

Eastcott Hill Swindon telephone 4022

*Printers to successful industry*



## Carlisle United



Back row (left to right): W. O'Neill, T. Clarke, A. Ross, S. Ternent. Centre row (left to right): D. Young (Trainer), P. Garbutt, G. Winstanley, D. Hemstead, J. Davis, M. Sutton, C. Balderstone, R. Stokoe (now Blackpool). Front row (left to right): G. McVitie (now with W.B.A.), T. Murray, R. Owen, R. Hatton, F. Barton, D. Martin.



The Cardiff City goalkeeper could only watch anxiously as this Swindon shot just cleared the bar.



# Fixture list 1970/71

## DIVISION II

### August

15	Hull City	(H) 1—1
19	League Cup (1)	
22	Sheffield United	(A) 1—2
29	Sunderland	(H) 2—0

### September

1	Watford	(H) 1—1
5	Blackburn Rovers	(A) 0—1
8	League Cup (2) Watford	(H) 4—2
12	Portsmouth	(H) 2—1
19	Carlisle United	(A) 1—2
26	Luton Town	(H) 0—0
29	Millwall	(H) 3—0

### October

3	Charlton Athletic	(A) 1—2
6	League Cup (3) Liverpool	(H) 2—0
10	Queen's Park Rangers	(H) 1—0
16	Hull City	(A) 0—2
21	Norwich City	(A) 0—1
24	Middlesbrough	(H) 3—0
28	League Cup (4) Fulham	(A) 0—1
31	Birmingham City	(A) 1—2

### November

7	Bristol City	(H) 2—1
14	Leicester City	(A) 1—3
18	League Cup (5)	
21	Oxford United (1)	(A) 0—0
28	Sheffield Wednesday	(H) 3—0

### December

5	Bolton Wanderers	(A) 3—0
9	League Cup Semi-Final	
12	Orient (2)	(H) 1—1
16	League Cup Semi-Final	
19	Sheffield United	(H) 3—0
26	Cardiff City	(A) 1—1

### 1971

#### January

2	Queen's Park Rangers (3)	(A) 2—1
9	Millwall	(A) 2—2
16	Norwich City	(H) 3—2
23	F.A. Cup (4) Leeds United	(A) 0—4
30	Sheffield Wednesday	(A) 2—2

#### February

6	Bolton Wanderers	(H) 3—1
13	Orient (5)	(A) 0—1
20	Oxford United	(H) 3—0
27	Birmingham City	(H) 1—2
	(League Cup Final)	

#### March

6	Middlesbrough (6)	(A) 0—3
13	Leicester City	(H) 0—1
20	Bristol City	(A) 1—2
27	Blackburn Rovers (S.F.)	(H) 3—0

#### April

3	Sunderland	(A) 2—5
9		
10	Cardiff City	(H) 2—2
12	Portsmouth	(A) 2—0
13	Charlton Athletic	(H) 1—1
17	Queen's Park Rangers	(A) 2—4
24	Carlisle United	(H) .....
28	Watford	(A) .....

#### May

1	Luton Town	(A) .....
8	F.A. Cup Final	.....

## FOOTBALL COMBINATION

### August

15	Crystal Palace	(A) 2—3
19	Norwich City	(A) 2—1
22	Bournemouth & B.A.	(H) 3—0
25	Chelsea	(H) 3—0
29	Ipswich Town	(A) 1—1

### September

5	Oxford United	(H) 2—5
12	Queen's Park Rangers	(A) 1—3
15	Cardiff City	(H) 2—2
19	Bristol Rovers	(H) 2—2
26	West Ham United	(A) 1—3

### October

3	Crystal Palace	(H) 2—1
10	Arsenal	(A) 0—7
14	Fulham	(A) 1—2
17	Queen's Park Rangers	(H) 1—1
20	Swansea City	(H) 0—1
31	Birmingham City	(H) 2—2

### November

7	Bristol City	(A) 2—4
14	Leicester City	(H) 2—1
21	Fulham	(H) 1—1
24	Gillingham	(A) 1—0
28	Tottenham Hotspur	(A) 0—5

### December

5	Plymouth Argyle	(H) 2—0
19	Bournemouth & B.A.	(A) 1—3

### 1971

#### January

9	Norwich City	(H) 1—2
16	Chelsea	(A) 0—2
23	Southampton	(A) P
30	Tottenham Hotspur	(H) P

#### February

6	Plymouth Argyle	(A) 4—2
13	Southampton	(H) 2—0
24	Cardiff City	(A) 2—1
27	Birmingham City	(A) 1—0

#### March

2	Swansea City	(H) 1—4
6	Gillingham	(A) P
9	Reading	(H) 2—0
13	Leicester City	(A) 0—2
17	Tottenham	(H) 1—4
20	Bristol City	(H) 2—3

#### April

3	Ipswich Town	(H) 3—2
7	Reading	(A) 1—3
12	Southampton	(A) 0—1
20	Swansea City	(A) .....
24	Bristol Rovers	(A) .....
26	Oxford United	(A) .....

#### May

1	West Ham United	(H) .....
4	Arsenal	(H) .....

Copyright of The Football League Ltd. and not to be reproduced without permission.



# League table division 2

(up to and including Wednesday, 21st April)

	P	W	D	L	Goals		Pts.
					F	A	
Leicester City ...	39	20	13	6	53	29	53
Sheffield United	39	19	13	7	64	40	51
Cardiff City ...	38	18	13	7	60	32	49
Hull City ...	39	18	13	8	52	35	49
Carlisle United ...	39	18	12	9	60	42	48
Middlesbrough ...	39	17	11	11	58	41	45
Luton Town ...	38	16	12	10	55	39	44
Norwich City ...	40	15	14	11	53	49	44
Millwall ...	40	17	9	14	54	42	43
Birmingham City	39	17	9	13	56	46	43
Q.P.R. ...	39	15	9	15	55	52	39
Sunderland ...	39	14	11	14	49	51	39
Oxford United ...	39	13	13	13	37	44	39
<b>Swindon Town ...</b>	<b>39</b>	<b>14</b>	<b>10</b>	<b>15</b>	<b>58</b>	<b>49</b>	<b>38</b>
Sheffield W. ...	40	12	12	16	50	64	36
Orient ...	39	9	15	15	27	47	33
Portsmouth ...	39	10	12	17	43	57	32
Watford ...	39	9	13	17	35	54	31
Bristol City ...	39	10	9	20	44	61	29
Charlton Athletic	39	8	12	19	39	62	28
Blackburn R. ...	39	6	13	18	34	64	25
Bolton W. ...	40	7	8	25	33	72	22

# Football Combination

(up to and including Monday, 19th April, 1971)

	P	W	D	L	Goals		Pts.
					F	A	
Tottenham Hotspur	39	24	12	3	75	18	60
Ipswich Town ...	38	19	13	6	73	45	51
Arsenal ...	34	20	9	5	74	28	49
Bristol City ...	36	19	10	7	75	40	48
Swansea City ...	38	18	12	8	65	42	48
Q.P.R. ...	38	19	7	12	63	55	45
Birmingham City	38	16	12	10	55	46	44
Southampton ...	39	18	8	13	47	42	44
Norwich City ...	39	13	14	12	39	41	40
Bournemouth ...	36	14	11	11	44	41	39
West Ham United	38	17	4	17	62	52	38
Leicester City ...	38	14	10	14	44	43	38
Chelsea ...	39	13	7	19	50	58	33
<b>Swindon Town ...</b>	<b>37</b>	<b>13</b>	<b>6</b>	<b>18</b>	<b>54</b>	<b>74</b>	<b>32</b>
Crystal Palace ...	38	9	13	16	46	53	31
Reading ...	36	12	6	18	57	76	30
Oxford United ...	39	12	5	22	55	76	29
Plymouth Argyle	38	10	9	19	55	81	29
Bristol Rovers ...	38	8	13	17	53	82	29
Cardiff City ...	35	9	10	16	36	34	28
Fulham ...	38	6	15	17	39	63	27
Gillingham ...	39	6	4	29	40	101	16

## Key of the board

### First Section

A—Burnley v Derby County  
 B—Chelsea v Coventry City  
 C—Everton v Blackpool  
 D—Huddersfield T. v Wolverhampton  
 E—Manchester United v Ipswich Town  
 F—Newcastle United v West Ham U.  
 G—Nottingham Forest v Liverpool  
 H—Southampton v Leeds United  
 I—Tottenham Hotspur v Crystal Palace  
 J—West Bromwich A. v Arsenal  
 K—Birmingham City v Portsmouth  
 L—Bolton Wanderers v Blackburn R.  
 M—Bristol City v Q.P.R.  
 N—Leicester City v Charlton Athletic  
 O—Middlesbrough v Sheffield United  
 P—Millwall v Hull City  
 Q—Norwich City v Cardiff City  
 R—Orient v Luton Town  
 S—Sheffield Wed. v Sunderland  
 T—Watford v Oxford United

### Second Section

A—Brighton v Halifax Town  
 B—Doncaster Rovers v Fulham  
 C—Gillingham v Port Vale  
 D—Plymouth Argyle v Bradford City  
 E—Preston North End v Aston Villa  
 F—Rochdale v Rotherham United  
 G—Swansea City v Tranmere Rovers  
 H—Walsall v Bristol Rovers  
 I—Aldershot v Hartlepool  
 J—Cambridge United v Crewe A.  
 K—Exeter City v Chester  
 L—Grimsby Town v Peterborough U.  
 M—Workington v Oldham Athletic  
 N—York City v Scunthorpe United



# History of Carlisle United

Founded 1904 by the amalgamation of Carlisle Red Rose with Shaddongate United. Elected to the Football League Division III (North) in 1928. Popularly known as the 'Cumbrians'.

Ground: Brunton Park, Carlisle.

Record attendances: 27,500 v Birmingham City (January 1957) and 27,500 v Middlesbrough (February 1970).

Record receipts: £7,925 v Middlesbrough (February 1970).

Colours: Blue shirts, white shorts and blue stockings.

Manager: Mr. I. MacFarlane. Previous managers have included R. Stokoe, T. Ward, A. Ashman, A. Beattie, I. Broadis, F. Emery, W. Shankly and F. Westgarth.

League career: Division III (North) 1928/39 and 1946/58; Division IV 1958/62; Division III 1962/63; Division IV 1963/64; Division III 1964/65; Division II since 1965.

Highest League positions: 1964/65 Champions Division III; 1963/64 2nd Division IV; 1966/67 3rd Division II; 1950/51 3rd Division III (North); 1961/62 4th Division IV.

Lowest League positions: 1934/35 bottom Division III (North); 1955/56 21st Division III (North).

Most points in a season: 1950/51 62 out of a possible 92; 1963/64 and 1964/65 60 out of a possible 92.

Least points in a season: 1934/35 23 out of a possible 84.

Highest number of League goals: 1963/64 113 in 46 matches.

Lowest number of League goals against: 1950/51 50 in 46 matches.

Highest League scores: 1928/28 8-0 v Hartlepools United; 1930/31 8-1 v Nelson; 1952/53 8-1 Scunthorpe United.

Highest League defeat: 1938/38 1-11 v Hull City.

Best F.A. Cup run: 5th Round twice (seasons 1963/64 and 1969/70).

Best League Cup run: Semi-Final in season 1969/70.

Individual scoring feats: 1963/64 H. McIlmoyle - 44 League and Cup goals (39 League, 5 F.A. Cup). Leading scorer in the Football League. 1928/29 J. McConnell - 43 League goals. Leading scorer in the Football League.

In five other seasons a Carlisle forward has been top scorer in Division III (North) - 1930/31 J. McConnell 37; 1938/39 S. Hunt 32; 1952/53 J. Whitehouse 29; 1953/54 A. Ashman 30; 1957/58 A. Ackerman 35.

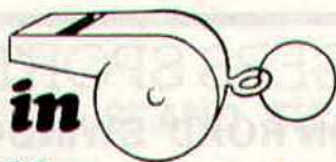
*To sign  
for the  
Town*



**Dave Mackay - who will be wearing the Swindon colours next season.**



## the man in the middle



## Ivan Thomas Smith

Started refereeing Schoolboy games and Rugby matches during 1949. Took Class Three in 1956, Class Two in 1957 and awarded Class One in 1961 by Lancs. F.A. Commenced serious refereeing after playing season 1959 in Accrington Combination and Lancs. Amateur League, 1961/62 West Lancs. League, 1963 Lancs. Combination, 1965 Football League Line, 1969 Football League Auxiliary Referee/Linesman List.

Officiated as Linesman in 1970 Semi-Final second leg Manchester United v Manchester City at Old Trafford also 1970 Linesman in Turin Anglo-Italian Competition Juventus v Sheffield Wednesday.

Mr. Smith is married with a daughter aged nine years and is a Lecturer in Physical Education at Accrington College.

Plays all sports at the College including soccer and has a keen interest in social and community work. Is a past Chairman of Accrington R.T. Enjoys holidays abroad - camping, caravanning and skiing.

F.A. Preliminary Coach also qualified umpire and referee for many games. Played soccer from schoolboy to semi-professional. Number one fan is his daughter, Karenne, who collects photographs and pennants. His wife also gives full support.

At the College staff and students follow his games quite critically so he has to keep on his toes at all times. Many of his friends are professional League players. Discussions of the game etc. helps his refereeing, and a better understanding of referees', linesmen's and players' problems.

**Your team  
for Planned Savings**



### SAVINGS ACCOUNTS

GOVERNMENT  
STOCKS

SAVE AS YOU EARN  
SCHEME

T.S.B.  
UNIT TRUST

CHEQUE  
ACCOUNTS

LIFE ASSURANCE  
LINKED SAVINGS

CASH  
DISPENSER

CHEQUE  
CARDS

SERVICE

FOREIGN  
CURRENCY

STANDING  
ORDERS

Ask for details at your local T.S.B. Office

## TRUSTEE SAVINGS BANK

93 Commercial Road, Swindon

Telephone 23949



## DON ROGERS SPORTS

### 29 FARINGDON ROAD SWINDON

Telephone 27378

Main suppliers to Swindon Town Football Club

Stockists of

**All leading makes of Football Boots and Clothing**  
**Table Tennis, Badminton, Rugby and Hockey equipment**

**IN FACT THE COMPLETE SPORTS OUTFITTER**

## RIMES of SWINDON

POPULAR EXCURSION TO

**WATFORD**  
**LUTON TOWN**

**Wednesday, 28th April**

**Dept. 15.30**

**Saturday, 1st May**

**Dept. 11.00**

**Fare**

**adult child**

**73p 50p**

**75p 50p**

**SERVICE DIRECT TO THE GROUND**  
**ALL SEATS NUMBERED AND RESERVED**

Book now at

**102 Commercial Rd., Swindon**  
**Telephone 27113**

**46 Cricklade St., Cirencester**  
**Telephone 3479**

**or with any of Rimes Booking Agents**

## *Dobell Shearman & Co. Ltd.*

### **HIGH STREET, OLD TOWN, SWINDON**

Telephone 4961

**FANCY and COMMERCIAL STATIONERS**  
**TYPEWRITERS and OFFICE EQUIPMENT**

**Greetings Cards for all Occasions**  
**from Leading Art Publishers**



## W. J. CASTLE

**Office and Bakery**

**4 and 5 MARKET STREET**  
**SWINDON**

**Telephone 22017**

**Specialists—**

**BIRTHDAY CAKES - WEDDING CAKES**

**DAIRY CREAM - PASTRIES**

**BUNS - ROLLS - SPONGES**





## **STAND TICKETS**

will shortly be on sale for the

## **ANGLO-ITALIAN INTER-LEAGUE CLUB COMPETITION 1971**



### **Swindon Town v Bologna**

**Wednesday, 26th May, 1971**

**Kick-off 7.30 p.m.**

### **Swindon Town v Sampdoria**

**Saturday, 29th May, 1971**

**Kick-off 3 p.m.**



In this Competition the rules provide that two points be awarded for a win, one point for a draw and **one point for each goal**. It is imperative, therefore, that we score as many goals as possible in our home matches and this is the field in which we ask for your help.

Please come along to the County Ground on the above-mentioned dates to give the team your vocal support in their defence of the trophy of the Competition.

The Anglo-Italian Inter-League Cup Competition has a great future in European Football, help us to have the name of our Club engraved on the trophy for the two successive inaugural years of the Competition.



## HARRY LUNN

(Ex NOTTS COUNTY, PORTSMOUTH and SWINDON TOWN F.C.)

**Fish Bar and Restaurant**  
**27-28 COMMERCIAL ROAD SWINDON**

RESTAURANT open 9 a.m. to 10 p.m. for

**Snacks - Lunches - High Teas - Evening Meal**

FISH BAR open Mid-day and Evenings until 11 p.m.

## HULFORD MOTORS LIMITED

**SELF DRIVE HIRE**

Fleet of 1970/69 Fords   Escorts De-Luxe  
Cortinas De-Luxe   Cortinas 1600 Estate  
(Bench Seat Column Change) — Zephyr V4s

**SHRIVENHAM ROAD**

(200 yards from Football Ground)

**Telephone 4934**

Large Car Park Available

## COWLEY BROS. (Wroughton) LTD.

BUILDERS OF MODERN ATTRACTIVE  
HOUSES and BUNGALOWS

Developments at

**SWINDON**

**WROUGHTON**

**BADBURY**

Office

**28 NEWPORT STREET**  
**SWINDON**

Telephone Swindon 6870

Reserved for British Rail



**Inter-City**



# Golden Goal Competition

Tickets bearing the time in minutes and seconds will be on sale before the game – price **one shilling**. The ticket with the exact time when the **FIRST GOAL** is scored will win

## £60

The ticket bearing the time when the **LAST GOAL** is scored will win

## £10

The official announcer will be the timekeeper and he will announce the official time of both goals. Should only one goal be scored the winning ticket holder will receive £70. In the event of no goals tickets bearing no score will win £10.

A further prize of **£10** will also be given for the ticket bearing the number corresponding to the official attendance at the match

**Cardiff City (10th April) – 1st Goal (£60)** 4m 19s. Mr. J. Rees, 6 Tockenham Way, Swindon.

**Last Goal (£10)** 62m 20s. Mr. P. Little, 23 Slater Road, Pewsey.

**Attendance (£10)** Actual 21,158. Paid on 20,281. Mr. W. Watts, 7 Downs View, Highworth.

**Charlton Athletic (13th April) – 1st Goal (£60)** Actual time 2m 47s. Paid on 2m 46s. Mr. R. Ward, 18 Salisbury Street, Swindon.

**Last Goal (£10)** Actual time 35m 16s. Paid on 35m 15s. Mr. E. Palmer, 5 Grove Road, Sherston, Nr. Malmesbury.

**Attendance (£10)** Actual 11,593. Paid on 15,001. Mr. E. Field, Horns Road, Stroud.

---

## Forthcoming matches

**SATURDAY, 1st MAY, 1971**

Football Combination – Kick-off 3 p.m.

### Swindon Town v West Ham United

**TUESDAY, 4th MAY, 1971**

Football Combination – Kick-off 7.30 p.m.

### Swindon Town v Arsenal

**FRIDAY, 21st MAY, 1971**

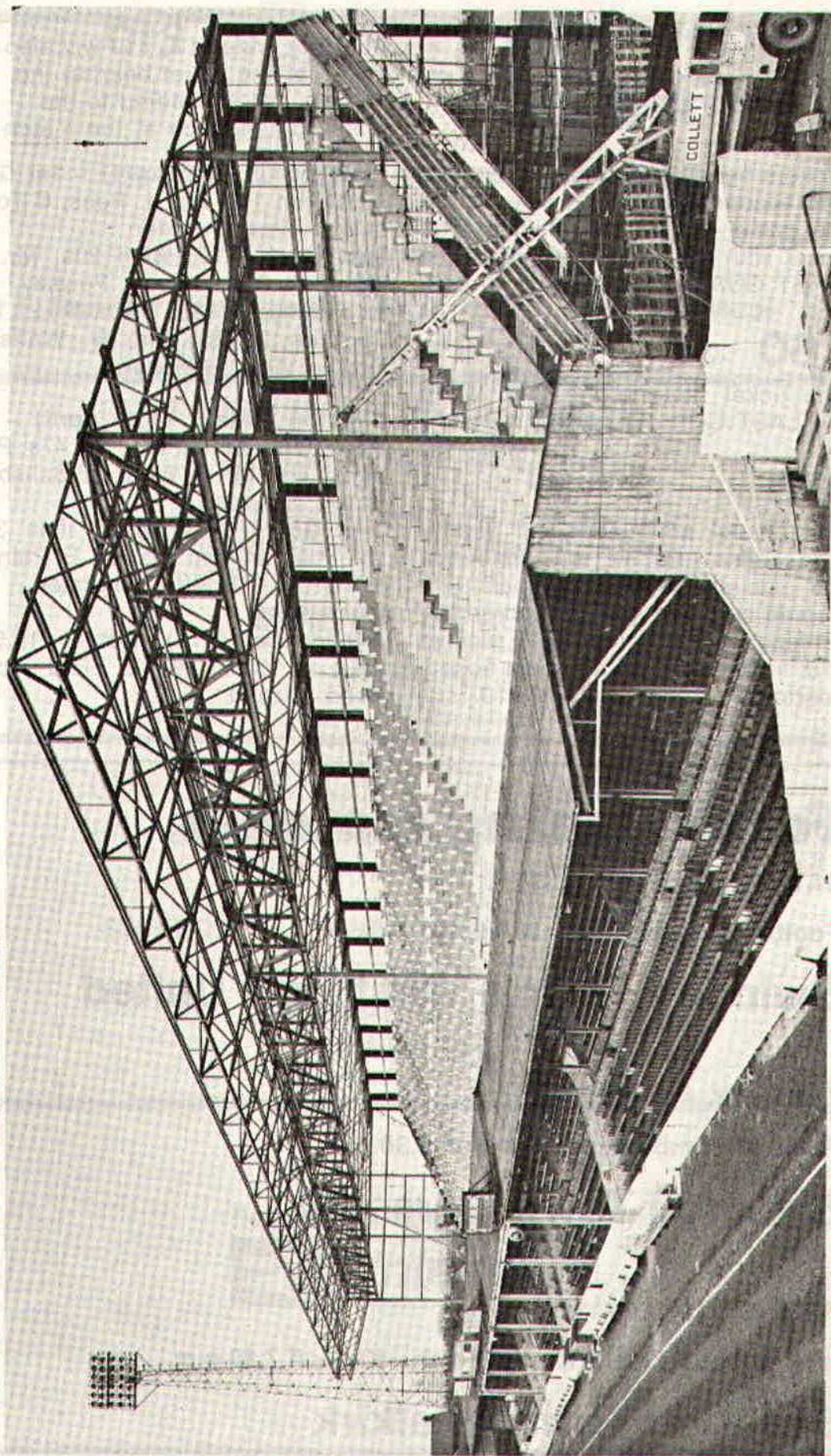
Inter-League Club Friendly Match – Kick-off 7.30 p.m.

### Swindon Town v Falkirk

---



## *The old . . . . and the new*



The new North Stand structure towers above the Stand that has provided a service at the County Ground for many decades.



Suppliers to the Swindon Team  
**MAY WE SUPPLY YOU?**



**EARLE**

of Chippenham Limited

MAIN

**FORD**

DEALERS

**COCKLEBURY ROAD CHIPPENHAM**

Telephone 3255

**H. HIBBERD LIMITED**

**FOR YOUR EARTH-MOVING EQUIPMENT**

*Plant Hire Contractors*



**40 NEWPORT STREET SWINDON**

Telephone Swindon 6125



# **follow the robins . . .**

## **to Watford Wednesday 28th April**

Take the A345 Marlborough Road from Swindon to Roundabout at Common Head, then on to A419 for Liddington, Aldbourne and Chilton Foliat. On leaving turn right, cross river, turn left for A4 and on to Hungerford. **(16½ miles)**

Take the A4 as for Wenbury and travel to Eddington, Speen then Wenbury. Leave by London Road and travel to Reading via Thatcham and Theale. Leave Reading by London Road and on to Twyford By-pass and Maidenhead Thicket. At Roundabout (junction of M4, A4 and A423) take third exit signed 'London M4'. **(53 miles)**

Travel along Motorway through five intersections for 'Slough A4', turn on to A4 then at 'William IV' public house turn right on to B470 then 1½ miles on turn left on to A412 and at 'The Crooked Billett' public house roundabout take third exit and 2 miles on at roundabout take first road A40 to Denham on A412, then to Rickmansworth, following A412 and signs to Watford. **(80½ miles)**

## **to Luton Saturday 1st May**

Leave Swindon by Shrivenham Road and at junction A361 and A420 keep right for Shrivenham and Faringdon. Leave as for Oxford and continue to Fyfield and then A420 to Oxford. **(30½ miles)**

Leave for High Wycombe A40 and at Wheatley By-pass A418 and A40, keep left and travel A418 to Thame and then via King's Cross, Stone, Hartwell, turning left and on A418 for Aylesbury. **(54 miles)**

Leave by A41 Tring Road for Aston Clinton. At junction turn left for B488 and Tring Wharf. Pass over cross roads and 2 miles on turn left for B489 and on to Dunstable. **(70½ miles)**

Leave Dunstable by Church Street A505 and travel 2 miles to Halfway House then on to Luton. **(75½ miles)**



Route kindly supplied by R.A.C.



---

## AKERS GARAGE LIMITED

THE STREET MOREDON SWINDON WILTSHIRE

Telephone Swindon 3457/8

main dealer for  
**VAUXHALL/BEDFORD**  
and  
Parts and Accessories  
Sales and Service

Showrooms open  
MONDAY to FRIDAY — 8 a.m. to 8 p.m.  
SATURDAY — Closed 7 p.m.  
SUNDAYS — 10 a.m. to 2 p.m. for Petrol and Viewing

---

# For a home win fill in this coupon NOW!

I am interested in a home on the Nythe Estate. ☐  
Greenmeadow Estate. ☐ Eldene Estate. ☐

NAME \_\_\_\_\_

ADDRESS \_\_\_\_\_  
\_\_\_\_\_

We are currently building the three Swindon developments indicated on the coupon, together with other housing projects in the counties of Somerset and Dorset.

**BRADLEY ESTATES**

74 VICTORIA ROAD SWINDON

Tel: 5865





## **spectator seating in high density polyethylene**

- \* Supplied to over 40 Football League clubs
- \* Any colour. No maintenance
- \* Industrial seats for the food, electronics and pharmaceutical industries
- \* Largest supplier of spectator and industrial seating in Europe
- \* Heavy, medium and light steel fabrication
- \* Custom made production line equipment
- \* Ancillary work for industry and the building trade

**FAST EFFICIENT SERVICE BY**



**MARTYN LYN SHAW LTD**

**BOUNDARY WORKS - STRATTON ROAD - SWINDON - WILTS**

Telephone: 24231